



Wild Coast self catering at Horizon View

555

Ary and Rod Drayton.

072 - 628 7878

043 - 738 5192

roddy@icon.co.za

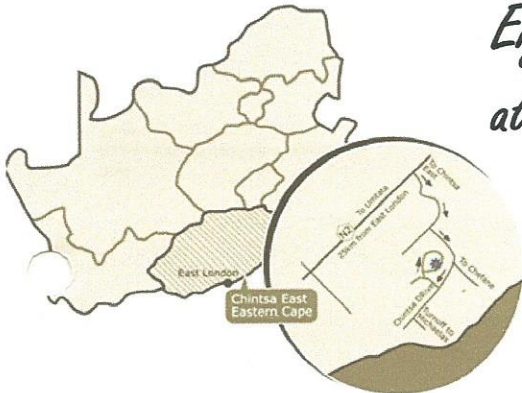
Horizon View,

555 Heron Loop,

Chintsa East,

Eastern Cape, 5275

*Enjoy the very best of Chintsa and the Wild Coast,
at your doorstep!*

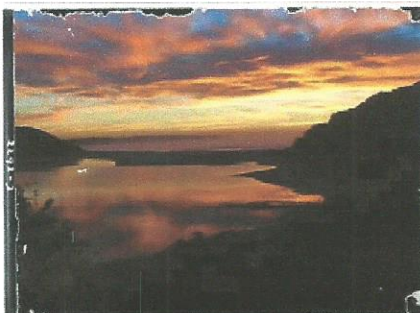
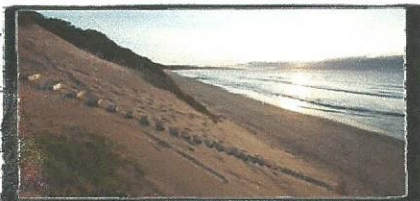


ABOUT CHINTSA:

Chintsa East in the Eastern Cape of South Africa is the southern gateway to the Wild Coast, famous for its unspoilt beaches, rich natural environment and rural lifestyle. Just 40km from East London, a major city for Eastern Cape, complete with established airport, Chintsa East serves as the perfect setting to explore vast, empty beaches of Chintsa and beyond.

Chintsa itself contains many attractions. Its beautiful 6km long beach is flawless in every way, whale and dolphin sightings are a regular occurrence. The town also has a good offering of restaurants, from the romantic to the rustic! The local country club also has tennis, bowls and volleyball. The vibrant youth team keeps everyone entertained with social activities in the summer season.

Other attractions are nearby, including Inkenkwezi Game reserve (7km) which offers elephant back riding, Arcena Adventure Resort (8km), Gonubie 9 hole, 18 tee golf course (30km) and a superb 12 hole, 18 tee course with magnificent sea views is available at Kei Mouth



ABOUT HORIZON VIEW SELF CATERING:

Located in a quiet area of Chintsa East, this modern self contained flatlet is within walking distance of the beach, shops and all restaurants in Chintsa. It is in a garden setting with abundant bird life and sea views

Ideal for a couple (and small child) the unit contains:

- ✓ Double bed and fold out sleeper couch.
- ✓ Wi fi internet
- ✓ All bedding, cutlery, crockery
- ✓ Television with satellite channels and video machine
- ✓ Oven, microwave and fridge
- ✓ Braai / BBQ Facility

Added benefits can be arranged for you (at additional cost)

- ✓ Airport transfer
- ✓ Room Servicing
- ✓ Dolphin and Whale encounters (August - December)
- ✓ Elephant back riding at nearby Inkenkwezi reserve
- ✓ Beach horseback riding (Chintsa West to Kefane)

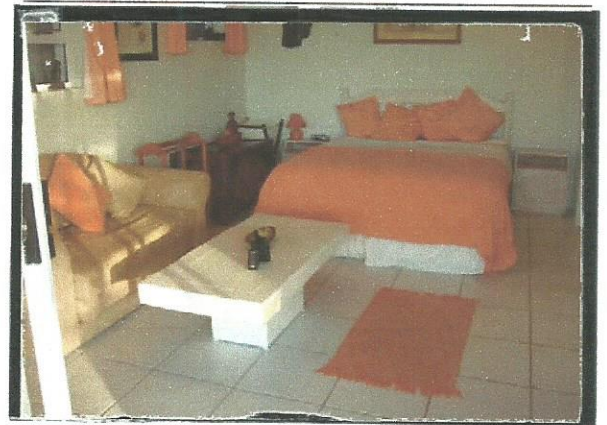
Directions:

From the East London airport: turn left and travel north through the town, follow N2 highway and Mthatha signs.

Approx 32Kms outside East London, turn right at East Coast/Chintsa East sign.

Travel for approx 7Km and turn left at the Chintsa East/Chefane sign. Travel for 5.4Km, over the hill and turn right into Dolphin Drive. Take first right into Heron Loop.

All roads are tarred.



555